



Pro-Dice Multi-Purpose Dicers



Pro-Dice 1000, 1150, 1300



Pro-Dice 2900



Pro-Dice 3200



Pro-Dice 850



Pro-Dice 1900

We provide technical support and service for all machines that we sell

MPBS INDUSTRIES

Equipment for Commercial Food Processing & Packaging
323-268-8514 323-268-6305 (fax) www.mpbs.com



Since 1938



400 lb SS Buggy



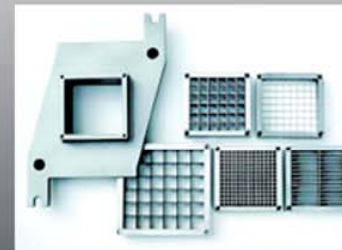
Single Blade



Double Blade



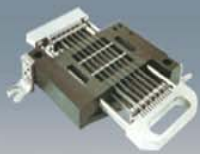
Four Fold Blade



Cheese Grid



Operation Panel



Step Cutting Grid with special blades for delicate items

TECHNICAL SPECIFICATIONS

Multi-Purpose Dicer

Independent and Corporate Food Processors, Hotel Restaurants and Institutional Purveyors can meet their food shaping needs quickly and efficiently, fresh, cooked and tempered meat, poultry, fish, cheese and vegetables are easy to cube, stripe or slice. Pro-Dice produce Stew Meat, Stroganoff, Fajita and Julienne strips, as well as Salad and Pizza Toppings. Pro-Dice's wide range of Dicers will meet the production Goals from the Butcher Shop to the Large Processors in Record Time and will be Cost Effective with less Manpower.



- Special Features:**
- Durable Stainless Steel Construction
 - Variable Pre-Press Control
 - Cutting Grids are changed without special tools
 - Work Station Configuration
 - Special Step Grids
 - Grid Blade Stabilisers

Model	PRO-DICE 850	PRO-DICE 1000	PRO-DICE 1150	PRO-DICE 1300	PRO-DICE 1900	PRO-DICE 2200	PRO-DICE 3200
Machine Output	850 kg / h (1874 lb / h)	1000 kg / h (2205 lb / h)	1150 kg / h (2535 lb / h)	1300 kg / h (2866 lb / h)	1900 kg / h (4189 lb / h)	2900 kg / h (6393 lb / h)	3200 kg / h (7055 lb / h)
Load Factor	1.85 kW	1.85 kW	1.85 kW	1.85 kW	4.30 kW	6.5 kW	11.3 kW
Chamber Length	310 mm (12.20")	530 mm (20.86")	370 mm (12.20")	530 mm (20.86")	530 mm (20.86")	550 mm (21.65")	620 mm (24.41")
Cutting Grid Area (W x H)	90 x 90 mm (3.54" x 3.54")	90 x 90 mm (3.54" x 3.54")	105 x 105 mm (4.13" x 4.13")	105 x 105 mm (4.13" x 4.13")	126 x 126 mm (4.96" x 4.96")	120 x 120 mm (4.72" x 4.72")	220 x 120 mm (opened) (8.66" x 4.72") 120 x 120 mm (closed) (4.72" x 4.72")
Horizontal Blade	N/A	N/A	N/A	N/A	N/A	Standard	Standard
Cutting Length	0 - 35 mm (0 - 1.37")	0 - 35 mm (0 - 1.37")	0-35 mm (0 - 1.50")	0-35 mm (0 - 1.50")	0 - 42 mm (0 - 1.65")	0 - 50 mm (0 - 1.96")	0 - 50 mm (0 - 1.96")
Rear Pre-Press	Infinitely variable	Infinitely variable	Infinitely variable	Infinitely variable	Infinitely variable	Infinitely variable	Infinitely variable
Side Compression	4 - Side	4 - Side	4 - Side	4 - Side	4 - Side	Cross slide gate	Cross slide gate
Cabinet Length	1100 mm (43")	1520 mm (60")	1260 mm (50")	1550 mm (61")	2030 mm (80")	2100 mm (83")	3500 mm (138")
Cabinet Width	650 mm (25")	650 mm (25")	670 mm (26")	670 mm (26")	1010 mm (40")	1055 mm (42")	1505 mm (59")
Cabinet Height	1065 mm (42")	1065 mm (42")	1065 mm (42")	1055 mm (42")	1940 mm (76")	1495 mm (58")	N/A
Height w/Hopper	N/A	N/A	N/A	N/A	N/A	2100 mm (83")	2750 mm (108")
Cutting Grid Sizes	5, 6, 7, 8, 10, 12, 14, 17, 21, 28, 42 mm	5, 6, 7, 8, 10, 12, 14, 17, 21, 28, 42 mm	5, 6, 7, 8, 10, 13, 15, 18, 21, 26, 35, 52 mm	5, 6, 7, 8, 10, 13, 15, 18, 21, 26, 35, 52 mm	5, 6, 8, 10, 12, 15, 20, 24, 30, 40, 60 mm	5, 6, 8, 10, 12, 15, 20, 24, 30, 40, 60 mm	5, 6, 8, 10, 12, 15, 20, 24, 30, 40, 60 mm
Machine Weight	235 kg (518 lb)	275 kg (606 lb)	270 kg (595 lb)	325 kg (717 lb)	430 kg (948 lb)	580 kg (1279 lb)	1700 kg (3748 lb)

All specifications are subject to change without notice.

Pro-Dice Multipurpose Dicers



850



1000, 1150, 1300



1900



2900



3200