



ReeTray 20 VG

MAP Tray Lidding & Sealing Machines

Advanced European Technology at Affordable Prices



Cycle speed varies with:

- Tray & film materials
- Tray size
- Product
- Machine settings



MPBS INDUSTRIES

Equipment for Industrial Food Processing & Packaging

2820 East Washington Blvd. Los Angeles CA 90023
323-268-8514 ♦ 323-268-6305 (fax) ♦ www.mpbs.com
Hours: 8:00 - 4:30 PM
Se Habla Espanol

ReeTray 20 VG MAP Tray Sealer

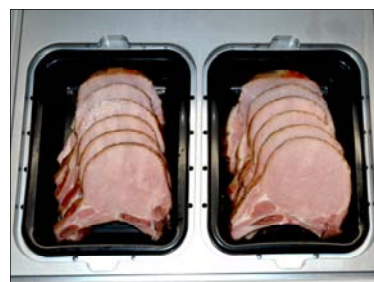
Technical Specifications*

FEATURES:

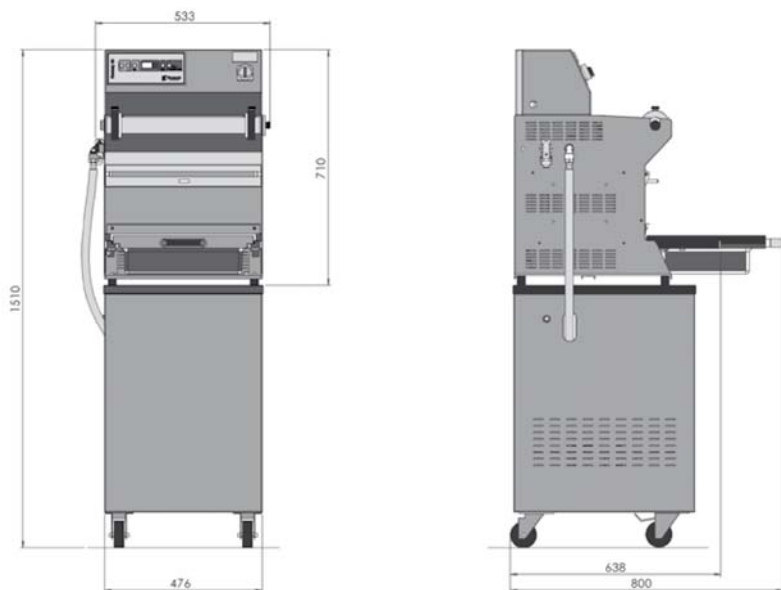
- Vacuum & gas machine for pre-formed trays
- No air pressure needed
- Stainless steel construction
- Includes sealing plates with profile cut around tray shape
- Microprocessor control
- Teflon coated sealing plate
- Cutting device die cuts film to tray profile
- Vacuum pump 20 m³/h - 2 to 3 cycles per min
- Compact
- Easy to clean
- Low maintenance
- Option:
 - Stainless cover for pump
 - Portable open dolly
 - Mobile portable enclosed stand
 - Upgrade to 40 m³/h pump mounted in mobile stand

Model	ReeTray 20 VG
O/A dimensions (WxDxH)	20.59 x 31.5 x 59.45" (523 x 800 x 1510mm)
Electrical	220 V / 60 Hz / 1 Ø, 2.5 kW
Capacity	1 - 3 cycles per minute
Diameter of web roll	2.99" (76mm)
Weight	50 kg (110.23 lb)

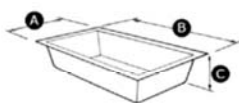
**All specifications are subject to change without notice.*



Lay-out ReeTray 20 VG

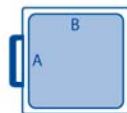


Exemple :

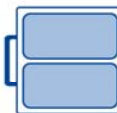


Operator side

N.1
A= 360 mm
B= 270 mm
C= 100 mm



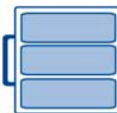
N.2
A= 170 mm
B= 270 mm
C= 100 mm



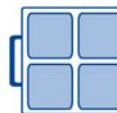
N.2
A= 360 mm
B= 125 mm
C= 100 mm



N.3
A= 105 mm
B= 270 mm
C= 100 mm



N.4
A= 170 mm
B= 125 mm
C= 100 mm



Vacu-Fresh® by MPBS Industries

Distributed by: